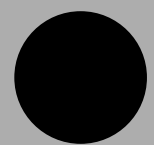
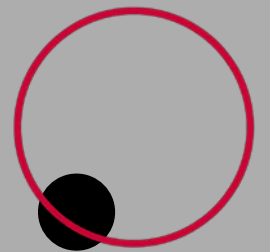


COPPELL ISD
you matter



Review
Timeline & Process



Update
District recommendations
for new boundary
alignment



Review
Updated plans from the
November board workshop



Share
Recommendations
from staff



Consider
Add'l info from staff
(program recommendations,
transfer process, etc.)





Timeline
& Process

Timeline & Process

- **May 2018** — Board workshop to discuss process and review timeline
- **July and August 2018** — Individual meetings with Board members to seek general input
- **Sept. 21 — Oct. 12, 2018** - Electronic questionnaire
- **October 16, 2018** — 1st Board Workshop with demographic modeling
- **November 12, 2018** — 2nd Board Workshop with tweaks to demographic models
- **December 10, 2018** — 3rd Board Workshop to refine/narrow models
- **December 17, 2018** – Share district recommendations and recap of Dec 10 workshop
- **January 10, 2019** — Present new boundary realignment model at Community Forum at CHS 9 Auditorium – 6:30 pm
- **January 16, 2019** - Facebook Live – 6:30pm
- **February 25, 2019** — Board considers and adopts final proposal
- **March through May 2019** — Inform parents of changes. Revise bus routes to accommodate boundary changes; welcome activities at campuses.



Staff Boundary Recommendations for Elementary Schools & Middle Schools

Sid Grant, Associate Superintendent



District Education Programming Plans

**Dr. Angie Applegate, Assistant Superintendent for Curriculum and
Instruction**



District Plans for Student Transfers

Kristen Streeter, Assistant Superintendent for Administrative Services

GRANDFATHER CLAUSE

A **grandfather clause** is an exemption that allows persons or entities to continue with activities or operations that were approved before the implementation of new rules, regulations or policies. In these situations, **grandfather clauses** may only be granted for a set period of time.



Communication Plans

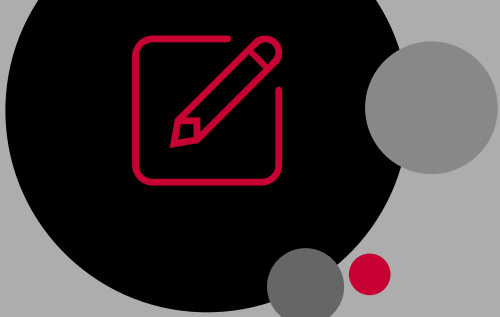
Kristen Streeter, Assistant Superintendent for Administrative Services

- **January 10, 2019** — Present new boundary realignment model at Community Forum at CHS 9 Auditorium
- **January 16, 2019** - Facebook Live – 6:30pm



Additional Information

www.coppellisd.com/realignment



COPPELL ISD
you matter

