



2016 Bond Construction Update

Dr. Greg Axelson
Chief Operations Officer



Current Major Bond Projects

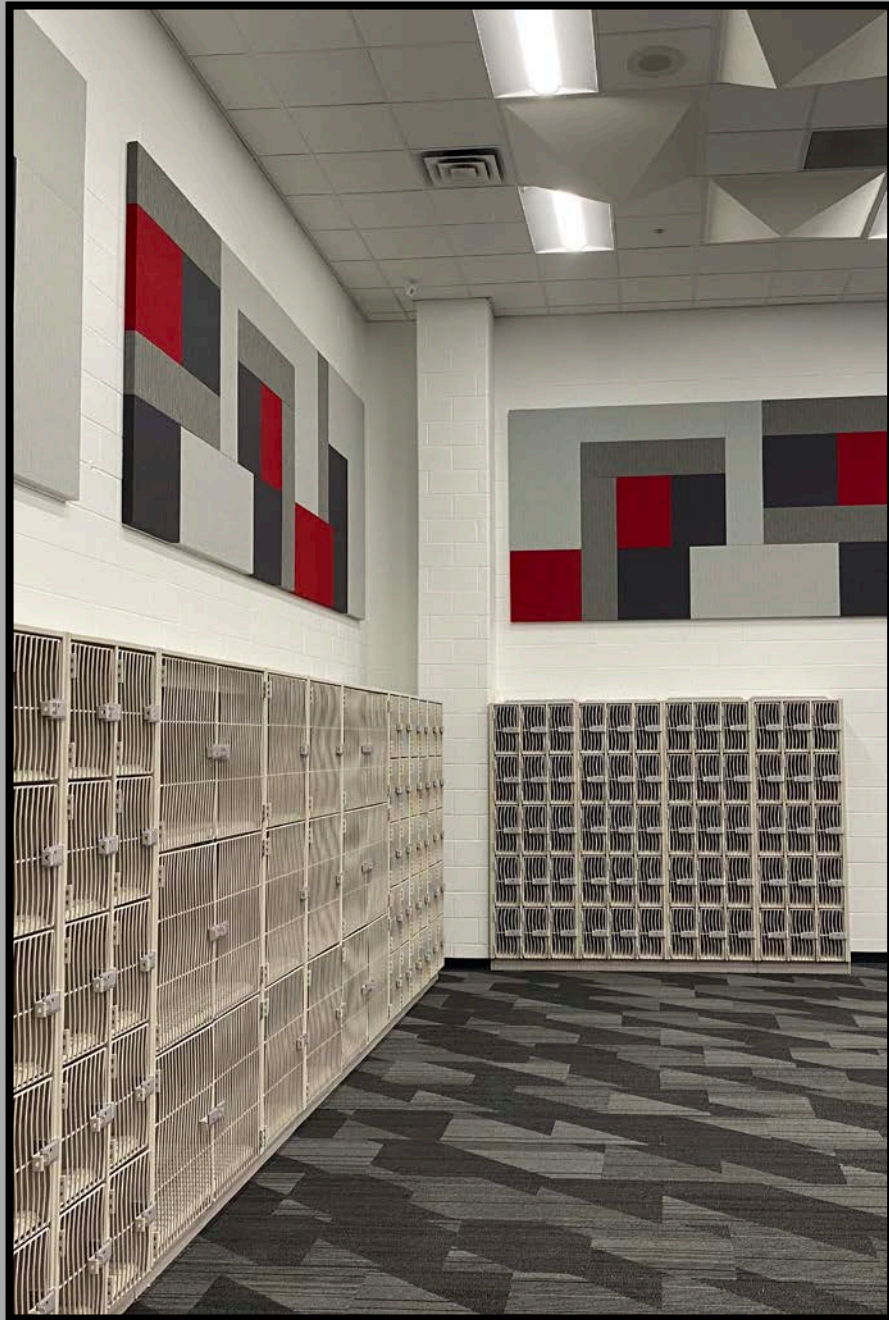
CHS Fine Arts renovations and Campus-wide updates

Lesley Field concession stand and restrooms replacement

Service Center restrooms renovation

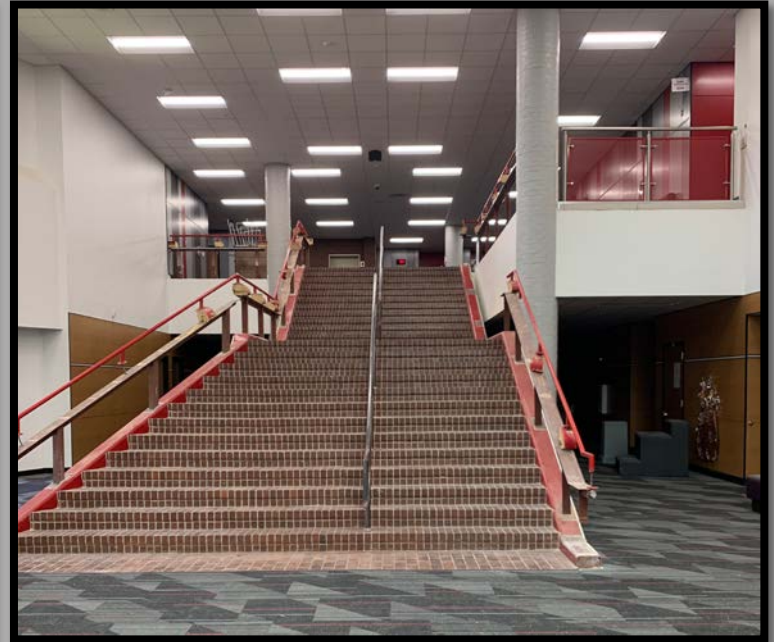
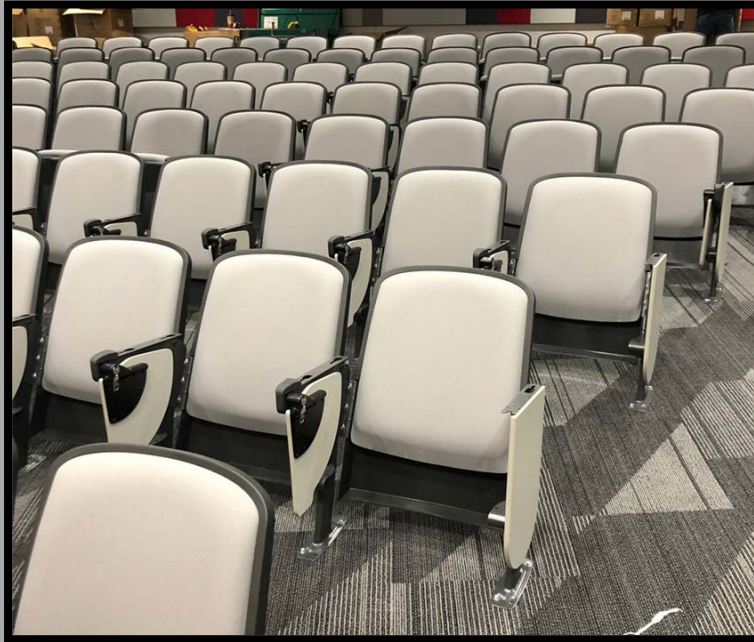
Elementary gym floor replacements

Elementary Vivitek board installations



Coppell High School

Fine Arts Renovations



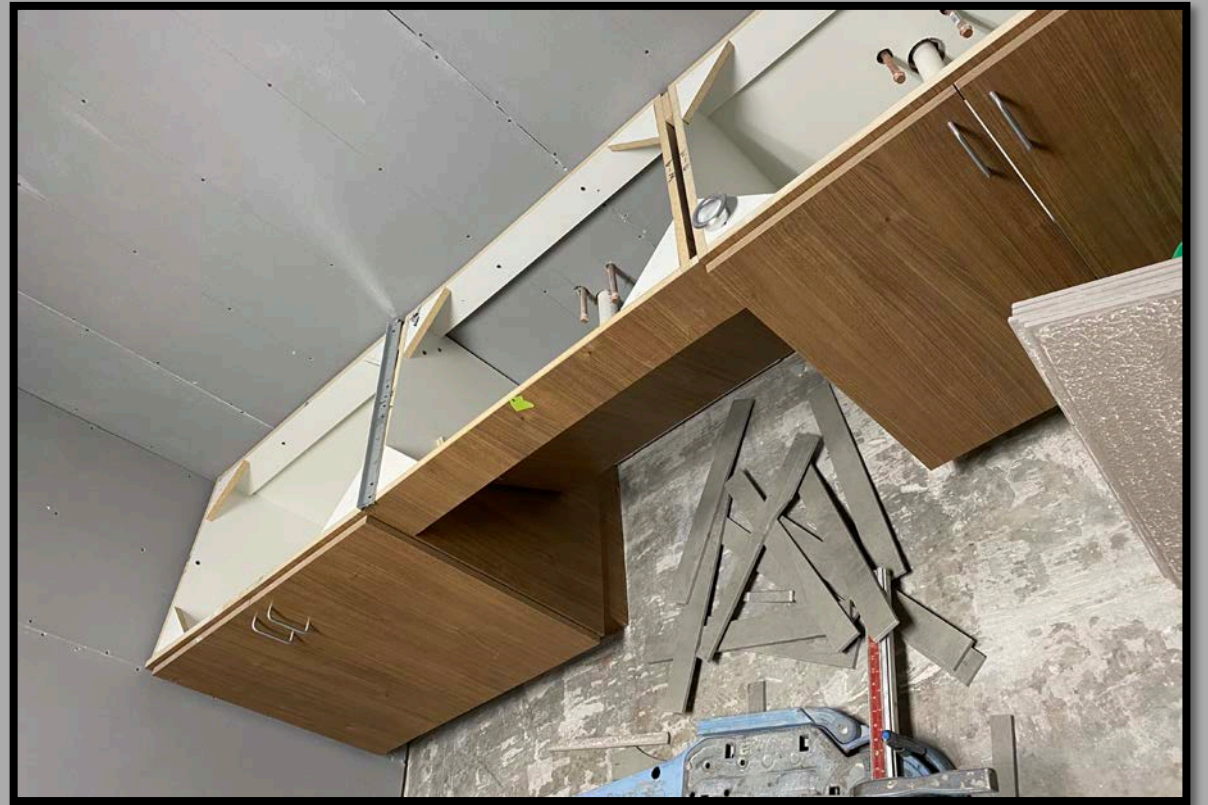
Coppell High School

Campus-wide Updates



Lesley Field at CHS9

Concession stand and restrooms



Service Center

Restrooms

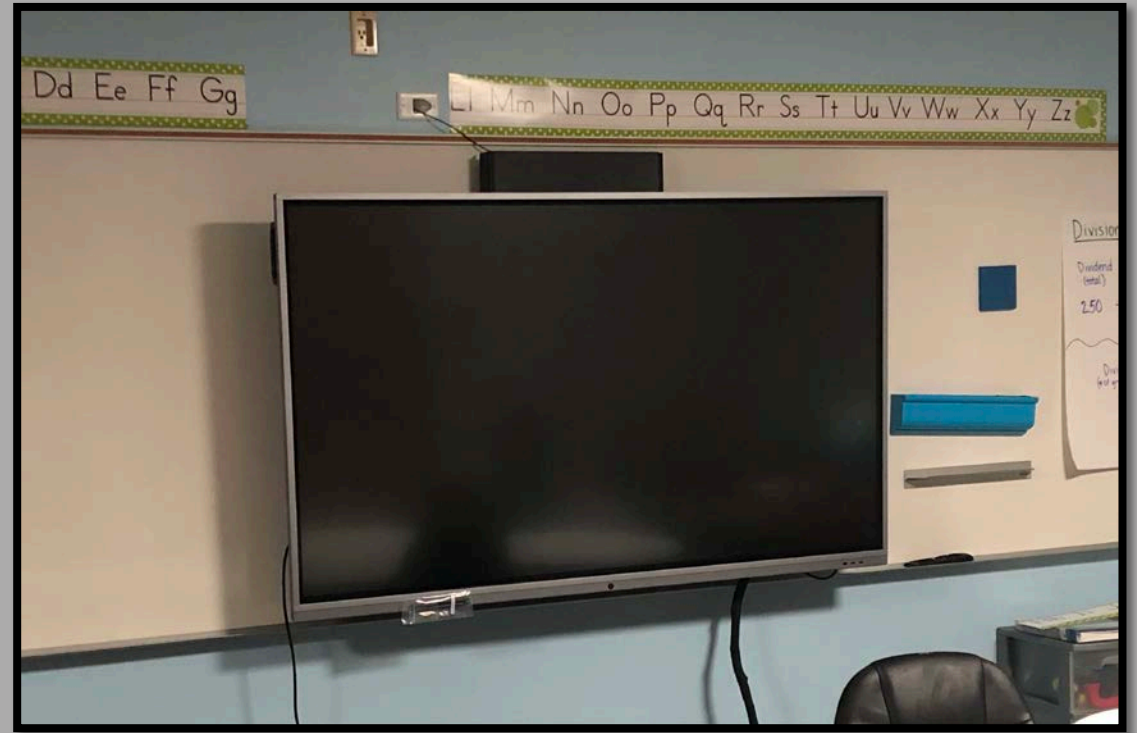


Gym Floor Replacements

Footprint Elementary Schools

New Tech High @ Coppell





Vivitek Boards

Elementary Schools