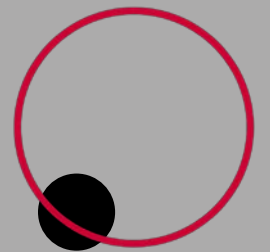
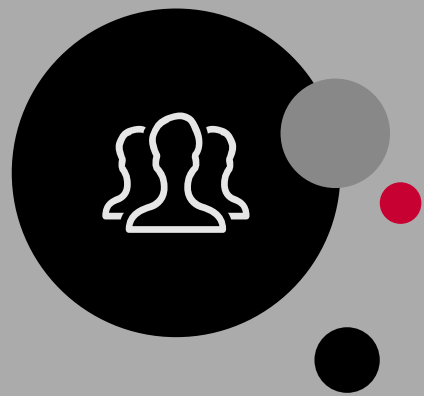


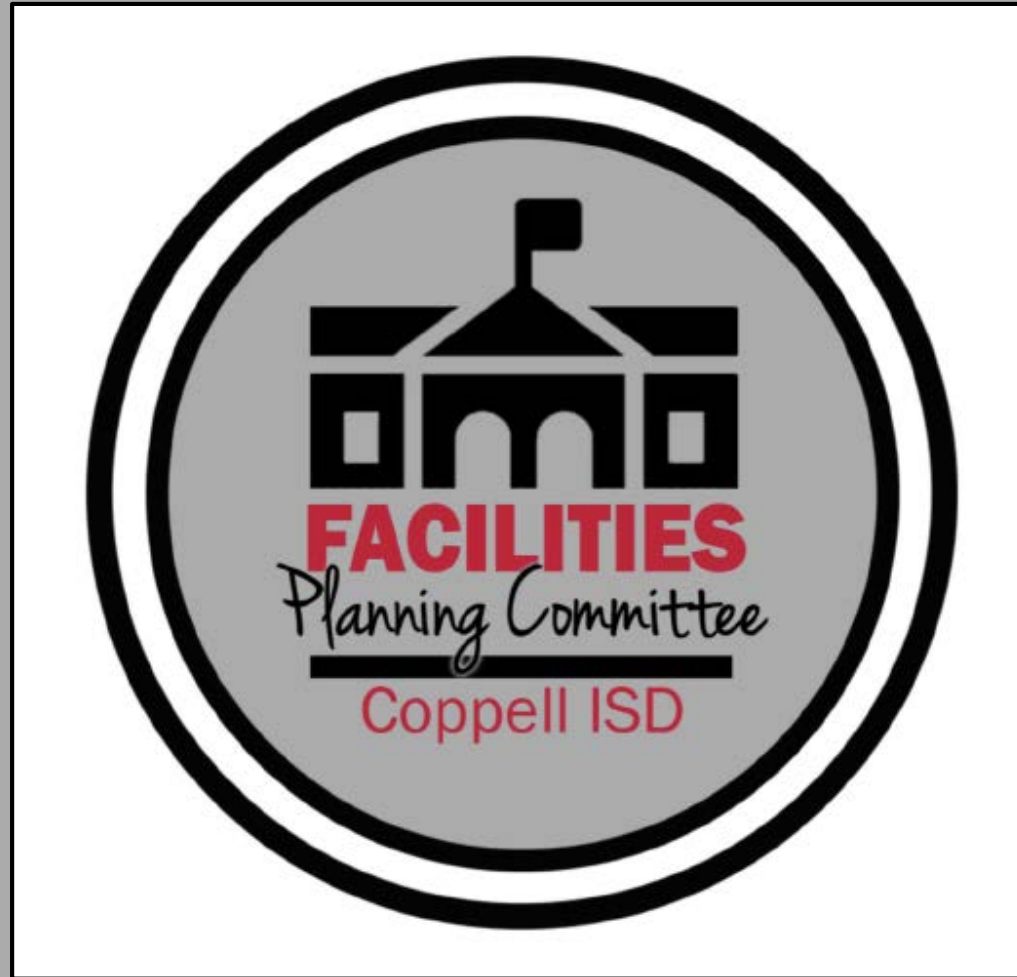
**ISD** COPPELL ISD  
**you matter**





# **Long Range Facilities Planning Update**

# LONG-RANGE FACILITIES PLANNING UPDATE



# PROCESS OVERVIEW

---

2019-2020 Long-Range Facilities Planning Committee

Tour of Facilities - Feb 2020

Executive Summary Draft - May 2020

Staff Feedback on Findings

Staff Feedback Summary

LRFPC Representative Review

Final Findings Summary and Report



# WHERE WE'VE BEEN

---

2019-2020 Long-Range Facilities Planning Committee

*COMPLETE*

Tour of Facilities - Feb 2020

*COMPLETE*

Executive Summary Draft - May 2020

*COMPLETE*

Staff Feedback on Findings

Staff Feedback Summary

LRFPC Representative Review

Final Findings Summary and Report



# WHERE WE'VE BEEN

---

2019-2020 Long-Range Facilities Planning Committee

Tour of Facilities - Feb 2020

Executive Summary Draft - May 2020

Staff Feedback on Findings

Staff Feedback Summary

LRFPC Representative Review

Final Findings Summary and Report

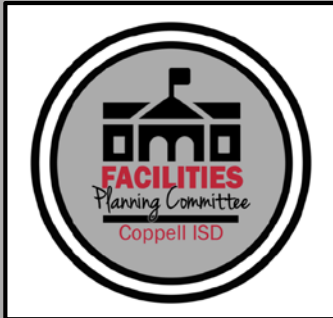
*COMPLETE*

*COMPLETE*

*COMPLETE*

*UNDERWAY*

*UNDERWAY*



# WHERE WE'VE BEEN

---

2019-2020 Long-Range Facilities Planning Committee

Tour of Facilities - Feb 2020

Executive Summary Draft - May 2020

Staff Feedback on Findings

Staff Feedback Summary

LRFPC Representative Review

Final Findings Summary and Report

COMPLETE

COMPLETE

COMPLETE

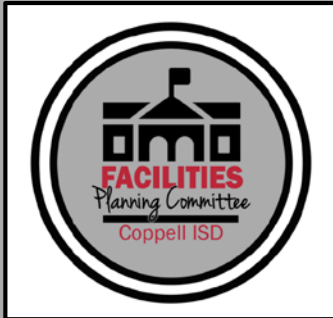
UNDERWAY

UNDERWAY

NEXT STEP

NEXT STEP

*\*Optional step, if desired by the Board of Trustees*



# WHAT'S NEXT

---

## Board Review and Consideration of Findings

### Short-term - 2016 Bond Savings & Investment Interest Income

- \$15,677,629 to date

*Board discretion*

### Long-term - Future project planning and prioritization

*Board discretion*

