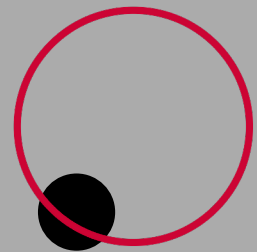
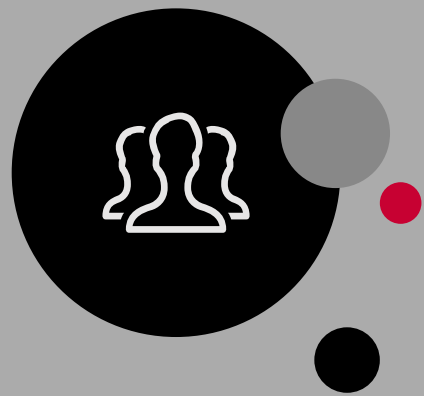
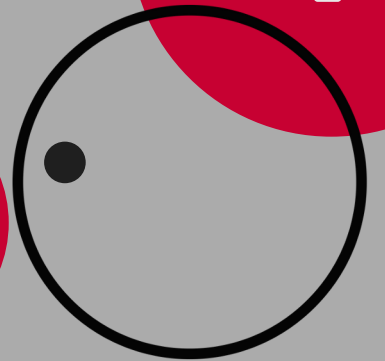


CISD COPPELL ISD
you matter





Enrollment Projections



Projected 2020-2021 Elementary Enrollment

Campus Name	February 2020 Enrollment	Self-Contained Special Education Programs	Pre-K & Early Childhood Special Education	Kindergarten	1st grade	2nd Grade	3rd Grade	4th Grade	5th Grade	Total	Change from February to August
Austin Elementary	470	0	65	55	57	65	61	76	67	446	-24
Canyon Ranch Elementary	707	0	0	125	125	122	145	129	132	778	71
Cottonwood Creek Elementary	516	17	0	65	65	85	84	97	86	499	-17
Denton Creek Elementary	595	11	73	67	67	87	80	91	91	567	-28
Lakeside Elementary	519	0	62	77	75	81	55	92	66	508	-11
Lee Elementary	729	14	0	120	120	110	123	119	103	709	-20
Mockingbird Elementary	531	8	0	69	69	76	79	96	102	499	-32
Pinkerton Elementary	350	0	0	61	63	56	49	55	68	352	2
Town Center Elementary	531	15	0	75	70	72	90	99	92	513	-18
Valley Ranch Elementary	583	20	0	82	80	86	75	102	91	536	-47
Wilson Elementary	517	0	46	76	76	74	95	76	83	526	9
Total:	6048	85	246	872	867	914	936	1032	981	5933	-115



Projected 2020-2021 Secondary Enrollment

Campus Name	February 2020 Enrollment	6th grade	7th grade	8th grade	Total	Change from February to August
CMS East	1075	371	364	380	1115	40
CMS North	1121	334	347	380	1061	-60
CMS West	1073	329	402	360	1091	18
Total:	3269	1034	1113	1120	3267	-2

Campus Name	February 2020 Enrollment	9th grade	10th grade	11th grade	12th grade	Total	Change from February to August
NTH@C	340	130	98	82	80	390	50
CHS9	983	1059	0	0	0	1059	76
CHS	2710	0	969	891	872	2732	22
Total:	4033	1189	1067	973	952	4181	148



Projected 2020-2021 CISD Enrollment

	February 2020 Enrollment	Projected 2020-2021 Enrollment	Change from February to August
Elementary School	6048	5933	-115
Middle School	3269	3267	-2
High School	4033	4181	148
Total:	13350	13381	31



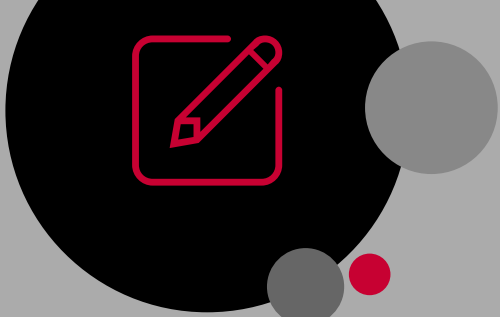
Policy Change Considerations

- Transfer Policies
 - FDA(Local)- Interdistrict Transfers
 - FDB(Local)- Intradistrict Transfers
- Fund Raising Policy
 - CDC(Local)- Crowdfunding



TEA Evaluation Waiver

The COVID-19 Pandemic has had many unforeseen impacts on the everyday operations of school districts nationwide including Coppell ISD. One such impact is the ability to finalize all portions of the employee evaluation process for the 2019-2020 school year. While every effort will be made to complete summative evaluations for all employees remotely, there are portions of some evaluations that cannot be completed in this manner. The Texas Education Agency recognizes these limitations and has provided an opportunity for each school district to submit an evaluation waiver. Submission of the evaluation waiver does require Board approval. TEA has indicated that all waivers submitted will be approved.



CISD COPPELL ISD
you matter

