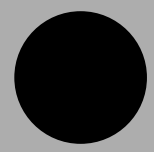
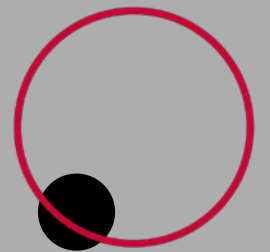
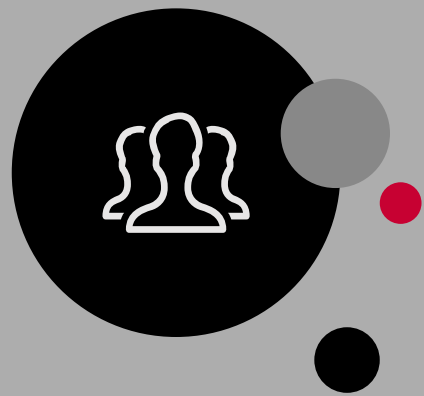


CISD COPPELL ISD
you matter





COVID-19 & Return to School Update

Dr. Brad Hunt

A large graphic with a white background and a red, torn-paper-like border. On the left side, there is a grey background with the text 'Return to School Planning' in a mix of script and bold sans-serif fonts. Above this text is an icon of a box of crayons labeled 'ABC', and below it is an icon of a backpack. In the center, the text '2020-2021' is written in large, outlined, sans-serif characters, with 'SCHOOL YEAR' in smaller, bold, grey sans-serif characters below it. On the right side, there are several icons: a school building, a document with the ISD logo, a speech bubble labeled 'FAQ', and a document labeled 'SURVEY' with a checkmark.



Local, State and Federal Expectations/Timeline

April 17, 2020

Governor Greg Abbott closes school until the end of the 2019-2020 school year.

June 18, 2020

Education Commissioner Mike Morath makes a statement “it will be safe for Texas public school students, teachers and staff to return to school campuses for in-person instruction this fall.” Flexibility for remote learning as an option.

July 7, 2020

Education Commissioner Mike Morath gives guidance on return to school plans.

July 15, 2020

Governor Greg Abbott makes statements about changing reopening guidelines and giving health department the authority to close schools.



Local, State and Federal Expectations/Timeline

July 16, 2020

Dallas County Health and Human Services orders that Dallas County schools cannot offer in-person learning until September 8.

July 17, 2020

Education Commissioner Mike Morath gives additional guidance on in-person learning.

July 27, 2020

CISD Board Approves changing school calendar to August 17 start date.

July 28, 2020

Texas Attorney General Ken Paxton sends letter saying school districts can now override health orders.



Community Engagement

- **CISD is hosting a Facebook Live on August 6 at 6:30 pm**
- **Commitment Forms are due August 12**
 - 10,000 Commitment Forms
 - 75% - Distance Learning
 - 25% - Face-to-Face Learning